



COMMUNITY FORUM

Kala Point

News, Views, & Opinion August 2007

Your Independent and Uncensored Resource



Member Annual Meeting Election Results:

Voting Results for Board Director:

Jim Williams	249
Jane Rogers	226
Steve Posey	224
Vince Verneuil	189
Hank Krist	161
Write-in Candidates	15
No-votes ***	112



*** A "No Vote" means that on a ballot where you have a choice to vote for three candidates, not all 3 votes were used.

See page 6 for an explanation of the strategy of using "No Vote".

Voting Results on resolutions:

A. IRS Ruling 70-604 Excess Income -Passed
90.3%, needed majority
354 to 23 votes (15 abstaining)

Many wondered, with the first election using Vote-By-Mail, if there would be fewer people attending the July 8th Member Annual Meeting. There were **287** people who attended the meeting at Chimacum High School and it appeared that attendance was slightly less. The total number of voting units represented at the meeting in person and by proxy was 136.

A total of **392** ballots were validated which is an increase of 14 ballots compared to last year's election. There are 598 members who are eligible to vote which represents a **voter turnout rate of 65.6 %**.

Over **335** ballots were received using vote-by-mail prior to the meeting. Only **four** ballots were determined to be invalid, which is a significant improvement over recent years! These four were turned in without any identifying information, making each impossible to validate as belonging to a KPOA member.



More Help Wanted!

Remember when the Community Forum asked for volunteer editors some time back? Good news! A few Kala Pointers have risen to the occasion and will continue the task of providing you with detailed news and a forum to express your views.

Stay tuned next month for some changes in our community newsletter – you may just like our brand new look! We still need more volunteers, so let us know if you're interested!

Extended Power Outage Hits Large Areas of Kala Point

Up to 12 Hour Duration Depending on Location

Water Supply Out in Upper Areas

Aging failed underground electrical cables left more than 100 KP homes without PSE electricity for up to 12 hours on July 8, beginning mid-morning. Many homes along Kala Point Drive and nearby area streets remained out of service



until 10:30 pm. Crews from PSE and contractor Potelco responded to numerous calls and eventually, after several hours, thought they had isolated the outage to a blown fuse within the transformer switch facility on Kala

Point Drive near Baycliff. However, it turned out it was not that simple. After numerous false findings and struggling with what technicians described as poor quality mapping records of cables buried in the streets, the root cause of the failure was found to be failed underground conductors beneath the 700 block of Kala Point Dr.

Homeowners in the upper reaches of Kala Point were without water services during the power outage. The Kala Point Utility Company does not maintain emergency generators, despite having promised the State Utility Commission to install generator back-up in 2002. What is most frightening about this is that in the event of a house fire during a power outage, the upper area fire hydrants are out of service. Lower levels remain served with water pressure by gravity flow for as long as the stored water holds out in storage tanks. Currently during power outages there is no pump operation, thus the supply is constantly drawn down without replenishment. Immediate water conservation should be the rule when the power goes out.

Millennium Cable service was also disrupted because required amplifiers to deliver the video, Internet and telephone signals into homes are powered by PSE electrical supplies with no backup source. Millennium technicians finally arrived in the late afternoon to begin distributing small gasoline generators to key equipment locations on street corners, where their amplified gear is located. Scattered homeowner generators could be heard operating throughout the community during the extended outage.

Owners are cautioned to use great care with private generators due to risks of carbon monoxide poisoning, fueling fires, and electric shock if improperly connected.

Reflective of other minimum-quality infrastructure in Kala Point, many original electrical primary service cables were not run in buried conduits, but simply buried in open trenches in or along the roadways. When these direct buried conductors fail there is a complicated technical locating process required to pinpoint where the failure has occurred, excavate it, and make repairs. Today PSE no longer permits developers to utilize this inexpensive method. The utility requires buried conduit systems from each transformer or switch to the next. Failed conductors can be rapidly pulled into these conduits upon failure, without digging in the streets. The protective conduit also helps extend the life of conductors. Plastic insulation on the heavy copper and aluminum primary cables, each carrying as much as 13.2 Kilo-Volts (KV), simply wears out over time when in contact with soils, and becomes heat stressed with more connected homes.

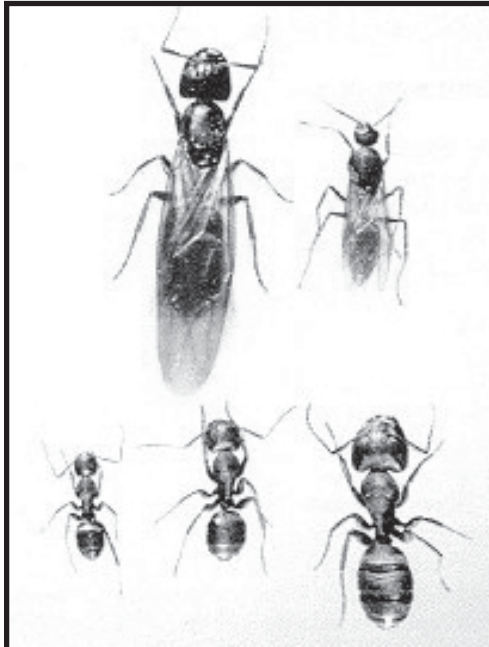


Area on KP Dr with failed conductor.

Carpenter Ants

One of Nature's Most Aggressive Wood Destroyers

Similar to termites, carpenter ants damage wood. Unlike termites however, carpenter ants do not eat wood for food. Carpenter ants only bore into wood to establish their nest. Carpenter ants can be considered



Adult Stages of the Carpenter Ant

w o o d destroying p e s t s because of their ability to cause damage to w o o d . They cause damage to wood primarily due to nest construction.

During the excavation

phase of nest building, Carpenter ants make small holes where the debris accumulated within the nest are tossed out. The tossings which consist primarily of wood chips, insect particles, dead ants, etc, often form small scattered piles. These small scattered piles are referred to as "frass".

A typical mature colony contains about 10,000-20,000 workers, with large colonies having up to 100,000 workers. It takes about 60 days to go from egg to adult. You might see an occasional ant that is a scout looking for food and may not indicate the presence of a nest, but continuous or numerous ants are a sign of nesting.

If you find a colony or nest do not simply spray "something" on the ants. Sprays will only kill the exposed worker ants. Spraying will have no effect on the queens. Therefore if large

numbers of worker ants begin to die, the queen will lay more eggs, and since the queen will not be killed by sprays, the number of eggs will grow and multiply and eventually outnumber by many times the original numbers. That means your ant colony is now several times larger!

The other reason you do not want to just spray them is that most chemical pesticide sprays tend to be very repellent to the ants and they can sense their presence and they will just avoid them. If the chemical is sprayed too close to the nest, the queens will engage the workers to pick up the eggs and move the nest farther away from the pesticide! Usually, as a result of moving, the queen will also have the workers divide into several new nests. This splitting of the nest is also called "satelliting". After the new nests are setup and established, the new queens begin to lay more eggs and the entire carpenter ant system is divided thus creating several nests instead of a single nest.

Most nests can be found in this order of frequency: Outside walls- 35%; Attic - 21%; Ceilings- 19%; Crawl space- 19%. In outside structures they are found- Forest (within 150')- 27%; Live trees - 17%, Dead trees, stumps or logs, buried wood - 16%.

Once a carpenter ant colony has been located, it needs to be treated directly with insecticides but not repellent pesticides. Only use non-repellent pesticides to kill carpenter ants since they will not detect its presence and will not avoid it. It is usually best to control them outside with baits.

Perimeter treatments of building foundations, lawns or trees with a liquid insecticide will help prevent outdoor foraging ants from entering. Many pest control companies recommend spraying four times every year starting in March and April until fall. This puts down a chemical protection before the Carpenter Ants begin to trail into a home.

Carpenter ants go dormant during the cold winter months so there are five months that the homeowner does not need to worry!

Heavy Machine Gun Fire & Explosions Heard in KP Coasties Train Off Naval Magazine Wharf



The unmistakable throaty rattle of 50-caliber heavy machine gun bursts is an atypical Kala Point experience. But that was the sound echoing into Kala Point homes from across the calm waters of Discovery Bay as darkness approached on Friday Evening, 13 July; then continuing into Saturday. The sound of this military gunfire, coming in controlled bursts of a few rounds (distinguishing military gunners from the 30 second bursts of Hollywood) was actually the firing of blank rounds during military training exercises. There are no safety issues firing blank rounds for training purposes. This is because no actual bullets leave the gun therefore there is no risk to us here in Kala Point.

Five 25-foot Coast Guard “Piranah Boats” maneuvered in mock assault and defense engagements off the wharf facilities at Naval Magazine Indian Island, across the bay from the KP beach, exchanging fire and detonating the occasional explosive charge, simulating an attack on the weapons handling depot. The Coasties, largely reservists, are attached to Port Security Unit (PSU) 313 of Tacoma. Officers and reservists camped the weekend on the grounds of the magazine facility, and practiced overcoming terrorist attacks on the updated wharf facilities that will support converted Ohio-Class Submarines beginning this fall.

The Port Security Unit mission is global, providing waterway and port security anywhere in the world in defense of American interests.

Many such units are currently deployed in Iraq, protecting coastal waterways, ports and offshore oil production facilities. Each PSU operates with an authorized strength of 140 reservists, supplemented by five active-duty personnel, typically operating with six of the fiberglass-rubber hulled fast harbor defense boats. Five of the six boats assigned to PSU 313 were seen during the exercises, which concluded Sunday.

A Good Dog-Wash Place

By Sylvia Bowman

It’s the Laundro-Mutt, located behind Pet Town, off Sims Way. What a treat! Our thick-coated Chloe really needed a bath so - with



our groomer on vacation - we decided to try the u-wash dog place. Went in with a grungy dog at 10:30 a.m. Walked her up the ramp to a big stomach-height tub that is equipped

with a tie (to keep the dog in the tub) and a strong shower hose. Warm water. The place supplies unscented shampoo for the dog and a big waterproof apron for the bather.

Chloe was clean as could be by 10:45. A powerful blower got rid of almost all the water on her body and legs. Then the chamois cloth next to the tub soaked the rest of the water off her head, neck and body.

When we walked out at 10:55, I had a damp, clean dog, already starting to fluff up. A shorthair dog would have been wholly dry. That’s a good deal, I think. No back-wrenching or soaking for the bather. All supplies. Out the door in 25 minutes. All for \$15. Their hours are 10-6 most days, but you can double-check that: the Laundro-Mutt, 2457 Jefferson, 385-6805.

We Get Letters

Letters to *Community Forum* reflect the views of the person writing the letter and may or may not be shared by *Community Forum*.

Speeding In Kala Point: Bringing in "off duty" sheriff

We hope you will take a very strong editorial position against the Board's bringing in "off duty" sheriff personnel to assist in enforcing traffic safety within Kala Point. Does 0.4% of vehicles going over 41 mph justify this? Has the Board really thought this through?



For example, will those who refuse to pay their legally questionable fines have liens placed on their homes? How many ticketed Kala Pointers will it take before someone raises the idea of a class action against the Board. Do we need more internal strife?

The person who submitted this editorial wishes to remain anonymous.



Cooks Night Out

Breakfast at Niblick's

A great way to start your day is breakfast at Niblick's at the Port Ludlow Golf Course which is served from 7:30 am until 11am with bright smiles, quick, courteous service and good old-fashioned home cookin'.

They have a breakfast burrito large enough for two with eggs, cheese and bacon, sausage or ham wrapped in a flour tortilla. For a light breakfast, Tide has two eggs, hash browns, and toast. The Timber is a full breakfast with two eggs, hash browns, and toast with bacon or patty sausage. The Trail is a breakfast sandwich with eggs and bacon, sausage or ham served on your favorite toasted bread. Prices range from \$4.95 to \$5.95. There is a patio to sit out on with an amazing view!

Niblick's Deli
751 Highland Drive
Port Ludlow, WA
360-437-0272

Neighbor-to Neighbor Classified Ads



Planning a Yard Sale?

We are planning to have a two-day yard sale in August to get rid of unneeded stuff we have – either 10 -11 or 17-18 of August.

If enough other residents would like to have a yard sale on one of those weekends, we'll put together a map of Kala Point and highlight the

yard sale locations and provide the map to people who show up for the event, (like the map the real estate folks provided for the Kala Point –wide open house they held June 23.)

Please contact Mike or Cindy at 379-0901 if you want to participate!

Fade, Glare, Privacy & Heat Solution-
3M Window/ Skylight film blocks UV rays to protect your furnishings. Keep your drapes open and let the sun shine in! Call Window Scapes Inc. **385-3810**



The Strategy of a "No Vote"

The Membership Is Changing the Way It Votes

A "No Vote" means that when you have a choice of three candidates on a ballot, you do not use all 3 votes. For example, you would vote for only one candidate although you can choose up to three, meaning there would be two "no votes" on that ballot.

There are several reasons why someone would decide to have "no votes":

1. Lack of information on all the candidates.
2. You only like one or two of the candidates.
3. You want to elect a "minority" candidate. This does not necessarily mean that you think that all the other candidates are bad or not qualified. It means that you feel strongly enough about voting for one particular candidate.

Many don't realize that if you want to elect a "minority" candidate and you vote for more than one, you actually take away a vote from the "minority" candidate because you are giving an extra vote to someone. More and more members understand this. Last year in the 2006 election there were 80 "no votes". This year there were 112 "no votes".

In order to understand why members are starting to utilize this voting technique in the case of Kala Point, you need to understand the icy grip that the "Concerned Members" have on the community.

The "Concerned Members" strongly lobby against those who disagree with them, as evidenced by their annual community letters. They label those who dare as dissidents and then ostracize them from having a voice in their own governance for any reason.

Using the strategy of the "no vote", it will ultimately help bring in an alternative way of thinking such as "diversity" instead of "dissension". The "no vote" can also help bring in a candidate that wants to look for ways to work together in spite of differences or different ideas. We all have a voice to be heard and deserve representation in our governance and the ability to equally participate.

If you have any questions about how the "no vote" works contact us at contact@tppnewsletter.com.

Using the strategy of the "no vote", it will ultimately help bring in an alternative way of thinking such as "diversity" instead of "dissension".



Women comprise 94% of our decision-makers.

Thank you.

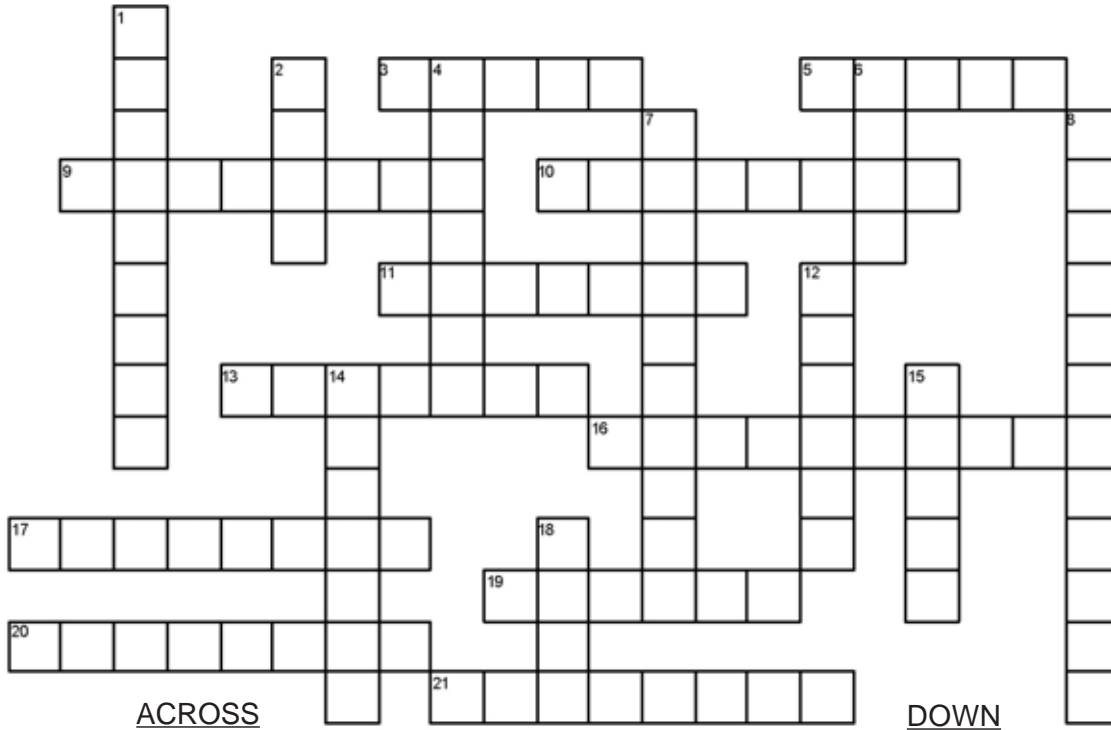
McCrorie Carpet One

"Creating Beautiful Homes since 1957."

PORT HADLOCK • SEQUIM • PORT ANGELES

COMMUNITY FORUM

Kala Point Crossword Puzzle (Hint: Look in previous month's issue)



ACROSS

DOWN

3 Hank _____ believes the board greatly influences the attitudes within Kala Point.

5 Steve _____ has had a great deal of success helping work out difficulties in business, working out interpersonal difficulties

9 Vince Verneuil thinks homeowners need to let the board know their _____ about things

10 Jim Williams thinks that it is the homeowners responsibility to keep _____ of what is going on

11 Jane Rogers feels that one has to be responsible to the community before one can feel the _____ in reference to a homeowners responsibility

13 Vince Verneuil is not a big believer of _____ ; a result not a deciding factor

16 The focus in the July issue was to learn about board _____ running for election

17 Vince _____ recently volunteered to be the fill-in for a person that left Kala Point

19 Jane _____ said the one thing she has is history since she has been here a long time

20 Hank Krist believes that it is important for homeowners to get as actively _____ and informed as possible

21 Jim _____ believes it is important to maintain a positive attitude in our community

1 Steve Posey thinks that it seems fairly straight forward that a homeowners responsibility is to read and comply with the _____ documents

2 Jane Rogers feels our budget is very _____

4 Hank Krist feels that the _____ Study is the primary issue regarding the budget

6 Jane Rogers feels that an issue of importance that she would like to address as a board member is to talk more and be more _____

7 Vince Verneuil thinks the issues important to Kala Point is to keep Kala Point _____, safe, friendly, and have good activities

8 Steve Posey feels an issue of importance to Kala Point is that there is no real _____, no give and take

12 Jim Williams says that after looking at the budget that it appeared to him that it was within reasonable _____

14 Jim Williams feels the major issue that he would like to deal with is what seem to him is Kala Point _____ into two camps

15 Hank Krist believes the _____ overriding issue in Kala Point is the culture perpetuated by the KPOA boards since he has been a resident.

18 Steve Posey feels a budget is a _____ when you plan for your wants or your needs

**Be the first to send in with the correct answers to: KIN, P.O. Box 816, Port Hadlock, WA 98339
Win a \$15 Concession Gift Certificate for Rose Theatre, a jewel of a cinema!**

Name _____ Phone: _____

Address: _____



Free Mac Computer Workshop

This free workshop is available to the general public and meets on the third Friday of each month from 7-9pm. It is held at the WSU Learning Lab at Shold Business Park, off Rhody Drive in Port Hadlock with the next meeting being held Fri. Aug. 17th.

This workshop covers programs that come free with the Mac, such as Address Book, Preview, iCal, iPhoto, iTunes, Stickies, TextEdit, Widgets, and many more. Since there only 9 iMacs in the lab, those with laptops are encouraged to bring them. If you plan to attend please let Bob Snow (sherman101@mac.com) or Francesca Drum (fdrum@olympus.net) know via email, so they can insure a place for you since space is limited. Be sure to check the web site before coming to the workshop- www.ptslug.org.



Community Forum is produced for Kala Point by a volunteer group of Kala Point residents that are committed to reporting the news of the community. Sometimes the news regarding the governance of Kala Point is controversial but you can count on *Community Forum* to be your independent and uncensored resource!

If you are interested in participating or would like to express an opinion on a Kala Point issue, you are welcome to contact us. As always, we welcome all communications, and will happily print the writer's name, if desired.

Please email us at contact@tppnewsletter.com or write: KIN publishers of *Community Forum*, P.O. Box 816, Port Hadlock, WA 98339



Pickleball The Fastest Growing Sport In America!

The playing schedule has changed! With the warmer weather and longer days upon us, we will be playing Tuesday and Thursday at 6:30pm and Saturday mornings at 10:00am on the courts close to the water tanks near Pinecrest. All equipment is provided, all you have to do is show up to play. There will be chairs if you want to come and watch. Everyone is welcome!

The game itself was co-invented in 1965 by former U.S. Congressman Joel Pritchard who lived on Bainbridge Island. It is played on a court that is the same size as a badminton court using a ball similar to a whiffleball and lightweight paddles. The small court allows players with varying degrees of mobility to participate in a way that the larger court of tennis sometimes prohibits.

Pickleball is not a game of strength. It is a fun game that is easy for beginners to learn. Pickleball is a highly contagious, progressive and incurable disease. The USA Pickleball Association estimates there are currently between 40 and 50 thousand infected people worldwide.

If you would like more information about pickleball or have any questions contact Hank at 379-9878 or hanksand@worldnet.att.net or Carol at 385-6428 or dreambead@aol.com.



What Many Do Not Know About Merging On To Highway 19

Crossing The Fog Line Is a Moving Violation & \$112 Ticket!

Did you know that if you cross the thick white line that separates a merge lane from a two-way road you can get a \$112 ticket?

When you merge going south onto Hwy 19 from Prospect Ave there is a merge lane and the highway traffic has the right of way. Those drivers expect that people in the merge lane will drive to the end before they enter Hwy 19. The line that separates the merge lane from the highway is called a "fog line". The same situation also exists at the end of Hwy 19 merging on to Hwy 104.

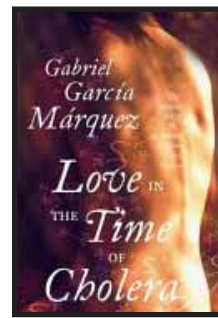


Please call the Washington State Patrol in Port Angeles at (360) 417-1738 if you have questions.

Classic Book Club

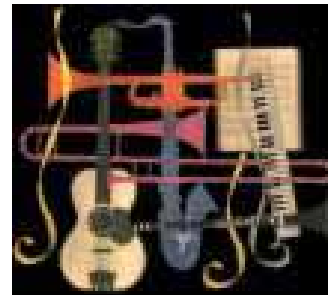
The Classics Book Group meets monthly at the Library in Port Hadlock at 2pm. There will not be a meeting held in August.

For the Sunday September 9th meeting we will discuss **LOVE**



IN THE TIME OF CHOLERA by **Gabriel Garcia Marquez**. This is a remarkable story set on the Caribbean coast of South America about unrequited love that survives half a century. It traces the lives of three people and their entwined fates. This is a novel about love in all its

guises: young love, married love, romantic love, carnal love, and even love with the symptoms of cholera.



Concerts On The Dock

Mark your calendars! The Port Townsend Concerts on the Dock Summer Series is in full swing and runs every

Thursday through August 30th. The concerts are held in the Quincy Street dock area off Water Street in downtown Port Townsend, next to the Water Street Brewing & Ale House.

These free concerts are from 6 p.m. to 8 p.m. at 639 Water Street. Arrive by 5:45 p.m. for one of the limited number of chairs available, or bring a lawn chair or blanket. Tap your toes - or get up and dance to the music. Bring a picnic basket, or grab some food from a downtown store or restaurant. Music fans can bring non-alcoholic drinks. No beer or wine is allowed in the concert area.

Scampi & Halibut's Seafood Grill - Satisfy your seafood craving. Over 70 delicious items to choose from. Beer & wine. Get hooked daily.. Catch us in Port Hadlock, just for the halibut! **385-0161**.

Furniture Upholstery, Fabrics, Foam and Throw Pillows! Spruce up your rooms before the houseguests arrive. Vintage furniture a specialty. Call Anne at **A Little Upholstery, 385-1556**.

Handmade Gifts for Every Occasion - (baby, birthday, anniversary). We take homemade items on consignment and/or rent crafter spaces (by month). **Five Fingers Handcrafted Gifts**, 911 Water St., PT. **385-0469**.

Westbay Auto Parts - Over 150 years of combined experience, our experts can help with automotive problems. Come in. We will install wiper blades or refill with purchase. 8 great locations to help you. **385-3476**.

Professional Roofing, Cleaning & Repair: C & M Roofing has worked for builders & residents in Kala Point for years. For reroofing, roofing repairs or cleaning of any type of roof, call Mike Perillo, **437-7935**.

Mole Control - No chemicals, no poison, no moles! Call Richard, **732-0510 or 1-888-854-4640**.

Fade, Glare, Privacy & Heat Solution- 3M Window/Skylight film blocks UV rays to protect your furnishings. Keep your drapes open and let the sun shine in! Call **Window Scapes Inc. 385-3810**

Highly Skilled Pruning of trees, shrubs, hedges and rhododendrons. Call Richard, **732-0510 or 1-888-854-4640**.

Landscape Disaster Repair offers weeding, pruning, fertilization, brush removal, hardscape solutions and the creation of low-maintenance yards. 24 years' experience. Call for information. Residential disaster repair as well. You name it and we probably do it. **360-379-6146**

What Lurks Under Your Home? Moisture problems? Wet crawl space? Make your home healthier, warmer, cleaner. For a free estimate or more information call "Clean Space Northwest," **1-877-698-0260**. Cont. Lic. #Ironwbl097kb.

Moving, Hauling, Dump Runs, Residential Cleanup, estate sale cleanup, junk removal, you name it. I have an 18-foot box truck for local or longer distance moves. **360-379-6146**

Mail Plus- All your Shipping & Packaging needs! w/UPS, DHL, FedEx. Notary, custom T-shirts, passport photos, pet tags, copies, biz cards, laminating/binding, banners, friendly service! Across from QFC by Curves in Castle Hill Ctr. Why drive all the way to the Post Office? **379-1156**

We Buy or Consign Firearms From Estates, etc- Bear Arms is a full service arms dealer. We buy, sell or trade arms plus ammo, accessories, sporting goods, & military items. In Kivley Ctr, Pt. Hadlock. **385-7658**.

The Village Barber- "...*Because life's too short for a bad haircut!*" 741 Ness' Corner Rd, Port Hadlock. Brad Garrison Gray & Mike Clark. Tues thru Fri-9-5, Sat-9-4. Call **385-6865**.

Shore Road Nursery - Country nursery owned by botanist David Allen. Specializing in native plants & select garden perennials, shrubs, trees. 616 Shore Road, PA. Open Tue-Sat, 10-5. **360-457-1536**.



Kevin Tuuri "Your Home Navigator"
(360) 385-9344 x 18 bus.
(360) 643-3087 cell
YourHomeNavigator.com
KevinTuuri@Windermere.com

Windermere
1220 Water Street
Port Townsend, WA 98368
(Kala Point Resident)

Port Townsend Computers - "We Make House Calls to KP." Complete sales, service & custom built computers for business, home or individual use. 40+ years combined experience. Call **379-0605**. Mention ad for 5% discount.

Professional Chimney Cleaning & Inspections - No mess cleaning, lowest fee around, fast & friendly, inserts, pellet stoves, woodstoves, minor repairs, chimney caps, chimney accessories. Call John, **360-769-2344** or email jew@aol.com.

Traveler's Propane- Are you tired of hauling your propane tanks and driving your RV to the nearest propane dispenser? We deliver! Homes, Businesses, Campsites, RV's, Trailers, B.B.Q's, and Forklifts. 5-50 gallon cylinders. Call **Lonnie, 360-344-4067 or 360-381-0158**.

Handyman - Gutter cleaning & drain flushing, retaining walls, rock gardens, patios, stairs, walkways, hillside stabilization/planting, concrete repair, & all phases of rot restoration, home maintenance, repair, and upgrades. Call **Ralph, Toll Free 877-841-1523 or Cell 360-340-6232**.

Weekly Meal Preparation For Seniors. Want An Easy Way To Enjoy Balanced Meals? Customized menus, including personalized recipes and grocery shopping. Call **Heidi's Taste of Home** for a free consultation! - **360-732-0482**.

Advertising Disclaimer

The printing of an article, classified or display advertising does not necessarily constitute endorsement by Community Forum staff. Ad space is limited and acceptance is dependent upon availability of space.

Popular 10-Week Stock Grows Abundantly

By Eline Lybarger

Matthiola or **Stock** are from the **Mediterranean**, but have been popular in the U.S.



10-Week Stock - Photo courtesy of Oceanview Flowers

for hundreds of years. They are in the 'Brassicaceae' or mustard family, which is responsible for their pungent spicy smell.

My favorite Stock is *Matthiola incana* sometimes called 10 Week stock because they are long

blooming. In our area they are biannual, but in colder areas they cannot take the winters.

In any case you will want to collect the large, round flat seeds for replanting. In early spring or late fall, when the weather is cool, you will be rewarded with spirals of blooms in pink, rose, lavender, red, and some combinations.

The leaves are oblong, about 4 inches in length. They quit blooming when the temperature goes above 65 degrees. Seeds or plants can be planted in the early spring or late fall when the weather is cool. Plant them in full sun, with rich well drained soil. The soil needs to be kept evenly moist but never soggy or the roots will rot. In windy areas the plants will also need staking. If you are buying plants, select those with abundant leaves but no flowers.

The flowers don't transplant well and will probably drop off or not attain their full height. Position the plants 7 to 12 inches apart. They look best in large groups of 12 or more. However, my grandmother always lined hers against the house where they were tall and stately, with smaller plants towards the front of the bed. You will want to plant plenty because they make a dramatic cut flower. For continued blooming, deadhead the flowers and fertilize the plants every 4 to 6 weeks.

Not all *Matthiola incana* are tall; they range in size from 1 to 3 feet and some branching types are 10 to 16 inches wide. However, Column and Double Giant Flowering are unbranched towering at 24 to 36 inches tall. They are a dramatic statement in any garden.

The Port Ludlow Garden Club meets every second Wednesday of the month at the Bay Club. Membership is only \$12 a year. Enjoy discount rates on field trips, a formal Christmas Tea, a Spring Plant Exchange, and Knowledgeable speakers and demos. And of course, lots of fun! Contact Dee McConnell at 360-437-7648 for more information.

Take a Neighbor to Court!

It's not every day you want to go to court, but we're sure you won't want to miss this "sneak preview" screening of MovieMakers production of "The Courthouse" at the Bay Club - Thursday August 30th. Doors open at 6 p.m. for the 7 p.m. special screening followed by an "After-Glow Party" with cast and crew.

Yes, it's finally here! Your friends and neighbors take center stage in this video presentation. You'll laugh at the characters, and get wrapped up in the stories as they unfold. This original production brings the best of local talent and fun to the screen for your entertainment.

Tickets are on sale now: \$6 in advance or \$8 at the door — for both the screening and party. What movie would be complete without popcorn? There will be popcorn and soft drinks . . . provided by American Marine Bank. DVDs of the production will be available for purchase after the showing.

Space is limited so to be sure of a seat, purchase your ticket in advance at the Bay Club Reception Desk or by mail ? just send your check to MovieMakers PO BBox 65145, Port Ludlow WA 98365 (include your e-mail address, we'll acknowledge and hold your tickets for you) and come early to join in the fun. Questions: Contact Maureen Poole Producer at 360-437-2165.

SU-DO-KU

Instructions: Fill in the grid so that every row, every column, and every 3x3 box contains the digits 1 through 9.

Level of Difficulty - Very Easy.

				5	7	1		
		9	1			8		7
7			4					5
6			9			2		
1		5		3		7		4
2		3		6				
9	5	2				3	7	8
3	1		8		2	4		
	8	6		7				

SU-DO-KU Puzzle: June Solution

5	3	4	2	1	8	9	7	6
6	2	9	4	5	7	8	3	1
7	1	8	3	6	9	2	5	4
8	5	3	7	4	1	6	9	2
1	6	2	9	8	3	5	4	7
9	4	7	6	2	5	1	8	3
3	8	5	1	7	2	4	6	9
2	9	6	5	3	4	7	1	8
4	7	1	8	9	6	3	2	5



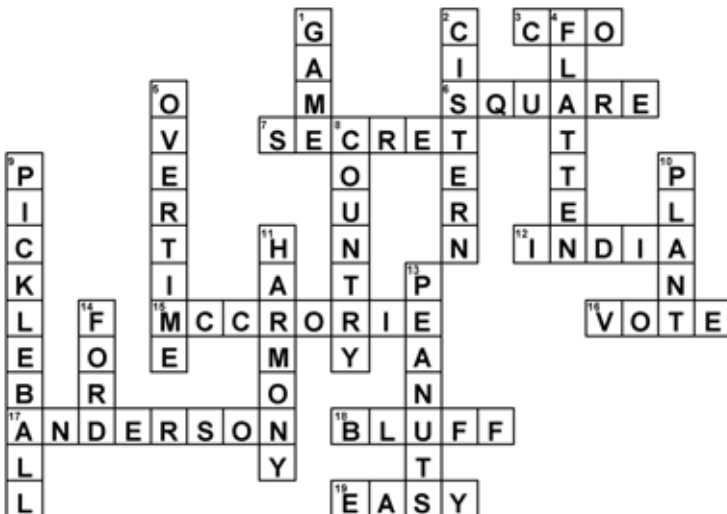
MovieMakers Workshop

Join us at the Jefferson County Public Library in Port Hadlock on Friday August 3rd at 10 a.m. for the next MovieMakers Workshop. Take this opportunity to meet some of our members, learn about the "MovieMakers/WSU connection"; and, if that's not enough, we'll have advance sale tickets for a member/cast/crew/friends showing of our first production . . . "The Courthouse."

We'll be covering a lot of ground as we continue our search for the perfect spot to film Ruby Heart (perhaps you have a suggestion); prepare for auditions, and discuss the collection of old radio equipment, and 1940's era clothing . . . music stands, wooden chairs and tables, desks, a coat rack, and more. Want to lend or donate items, and find out how the items might be used? Come! We'll be discussing the building of some sets. Are you handy? Perhaps you can lend us a hand!

MovieMakers is our name and describes our purpose . . . And it's all for fun. We hope you join us. Contact Producer Maureen Poole 360-437-2165 or moviemakersvp@aol.com if you'd like more information.

Kala Crossword Puzzle: June Solution



Port Ludlow Garden Club Field Trip to Day-Lily Fields & Mount Walker



On **Wednesday, August 8**, Port Ludlow Garden Club participants will meet at 9:45 a.m. at the Bay Club where car pools will be formed for a field trip to see the day-lily fields and gardens at B & D Lilies. The owner, Dianna Gibson will give a lecture about lilies, how to plant and take care of, and answer any questions. Departure time from the Bay Club is 10:00 a.m. Riders are asked to contribute \$4 each to their drivers for gas.

Driving instructions from Port Ludlow are: take Oak Bay Road to Hwy 19 (Beaver Valley Road). Turn right onto Hwy 104 to the end and merge onto Hwy 101 North. On the left hand side, take the first driveway. You will see 2 black mailboxes. Go across a bridge and through a gate. The address is 284566 Hwy 101, Port Townsend, WA and the phone number is 360-765-4341.

Bring a sack lunch, wear comfortable shoes. Hostesses will provide desserts at B & D Lilies where you can decide if you would like to eat your lunch there where they have several picnic table and chairs or drive south down Hwy 101 to Mt. Walker, just five miles south of Quilcene or about 17 miles from the lily farm.

Those who choose to eat lunch at B & D Lilies can plan on being back at the Bay Club by 1:30pm. Those who decide to experience the spectacular view from the top of Mt. Walker can plan on being back around 3pm.

Mt. Walker is densely covered with 100 year-old Douglas-fir trees with native Pacific rhododendrons that grow along the road. This popular drive begins five miles south of Quilcene on U S Highway 101. Forest Service Road 2730 (Mt. Walker Viewpoint Road) will take you 4 miles to Mount Walker's summit (2,804 feet). The gravel road is narrow and steep with some turnouts. It has two viewpoints with parking areas and vault toilets. There are two picnic tables at the north viewpoint.

From the north viewpoint Mt. Baker can be seen to the northeast. From the south viewpoint you can see why Hood Canal is called the vast arm of Puget Sound. Mount Rainier, the highest peak in the state, as well as major metropolitan areas can also be seen- Everett 33 miles away; Seattle 28 miles away; and Tacoma 39 miles away. On a clear day you can even see the Seattle Space Needle!

On September 12th there will be a car-pool field trip to Whidbey Island to visit nurseries and have a picnic lunch.

For questions or reservations, call Syd Hatch at 437-9111.

GALATEA CAFÉ & TAPAS BAR

"We serve tapas with a twist"

**Serving Dinners Wed.-Sat. from 5 p.m.
Sunday Brunches, 10:30-2:30**

Also Featuring:

*Steaks, Lamb, Paella, Impeccably Fresh
Seafood, Organic & Vegetarian Menu;
Plus a World Famous Martini Menu,
Wines & Sangria & Desserts*

**842 Washington Street
Port Townsend**

385-5225

Reservations Recommended



www.galateacafe.com

Renaissance Auto Design

**"The Best
In The West"**

**Collision Repair, Dupont Paint
Custom Graphics, Restorations
FREE ESTIMATES**

1163 Four Corners Rd.
Pt. Townsend

379-3980



Wildfire...Are You Prepared?

Wildland Fire Drill July 7th in Port Ludlow

The Washington Department of Natural Resources, together with the U.S. Forest Service/Olympic National Forest and Jefferson County fire districts, staged a wildland fire drill on Saturday, July 7th in Port Ludlow. The drill involved the neighborhoods of Puget Loop and Bywater Bay.



The agencies practiced triaging structures in a simulated wildland fire situation. The practice scenario involved a wildland fire that moved from one neighborhood to another. The agencies mobilized twice during the day, with a safety briefing for firefighters.

“The object of this drill is to practice making decisions about homes in the path of the simulated fire,” said East Jefferson Fire Rescue Chief Mike Mingee.

“In conjunction with the staging of this drill, homeowners were reminded that choices they make to keep brush cleared from structures on their property ultimately have a major role in the choices open to firefighters should a fire strike their neighborhood,” Mingee said.

We are well into wildland fire season already this year,” he added. “We don’t want a Lake Tahoe-type situation to happen here,” referring to the late-June blaze that destroyed more than 200 homes in Tahoe.

To protect their homes, residents are advised to:

- ◆ Create a 30-to40-foot safety zone around the home.
- ◆ Keep leaves, dead limbs and twigs, and all flammable vegetation cleared away from structures.
- ◆ Remove dead branches that extend over the roof.
- ◆ Remove vines from the walls of a structure.
- ◆ Clear a 10-foot area around propane tanks and barbecues.
- ◆ Stack firewood at least 100 feet away and uphill from the home.
- ◆ Have a garden hose that is long enough to reach any area of the home and other structures on the property.
- ◆ Create a family disaster plan.
- ◆ Build with noncombustible construction.

For additional information on how to protect home and property from wildfire, visit www.ejfr.org.

Practice Wildfire Safety

People start most wildfires...find out how you can promote and practice wildfire safety.

More and more people are making their homes in woodland settings - in or near forests, rural areas or remote mountain sites.

For a FREE brochure to learn about how to prepare for a wildfire contact:

Community Forum, P.O. Box 816,
Port Hadlock, WA 98339

Walking/Hiking Club 9am On Thursdays!



The Walking/Hiking Club meets on Thursday mornings at 9am. Come when you can and the walk or hike sounds right for you. You can depend on the support of the group to help motivate each other to get out and get walking.

If you want to exercise, learn new trails and get acquainted with the beautiful area where we live, come join us! Come for the camaraderie and exercise! Bring water, good walking shoes, a walking stick if you have one. And bring your dog for a nice walk too!

Everyone is welcome and bring a friend! Come and explore new destinations as well as some old favorites. Emails are sent out each week announcing where the next walk will be. If you have a favorite hike or would like to suggest a new one let us know. We love to try out new places.

For more information contact Michael at michaelkubec@cablespeed.com or 385-2041 or Bill at bkaune@cablespeed.com or 379-3808.



Recent Trip To Lake Crescent

Pictured is a recent hike in July to Lake Crescent on the Spruce Railroad Trail. Afterwards, some had a picnic lunch and others had lunch at the nearby resort. Come join the fun!

KPOA Board Meetings Made Easy!

**Don't Have 3-4 Hours
To Attend Board
Meetings? Do You
Work During The Day
and Can't Attend?**



Community Forum is offering audio CD's of KPOA Board Meetings broken down Section By Section for \$5! You only listen to what interests you. Included with the CD is a table of contents that clearly identifies and gives an accurate overview of each part of the meeting.

Keep up on the latest KPOA business: Governance, each committee, financial reports, board goals, member comments, managers reports and much more. You decide quickly and easily! **To order your CD send a \$5 check to: KIN, PO Box 816, Port Hadlock, WA 98339.**

We Have You Covered!

LUBE, OIL & FILTER

\$16.95

Most Cars

Courtesy
FORD 

14082 Airport Cutoff Road • Port Townsend
Shop Online @ www.lowcostfords.com
1-360-385-0145 1-877-944-3748

COMMUNITY FORUM

Enjoy A Night Of Mystery!

A Clever Concoction of Crime and Cocktails with the Fun 'n Games Group

by Carol Fischbach

On Saturday, August 18th the KPOA Fun 'n Games group will host an adult Murder Mystery Party that will be



an unforgettable experience - be it your first murder mystery experience or your fortieth.

The setting is an island paradise where you'll find

that murder meets mayhem and the intrigue begins! While most folks vacation to get away from their troubles, for one unfortunate soul, it will mean the end of their travels.

Everyone has a part in solving the murder mystery. The guilty party will

mingle among the guests. Neither the murderer nor the victim will know who they are until they get to the party. It is not pre-scripted - each guest will have simple objectives to complete while they mingle and have fun. You will be left with the task of deciphering between the facts and falsehoods that plague this paradise in order to make a killer pay for his crime.

Dress the part! Wear your Hawaiian, or floral summer clothes and be ready for a night of murder & mayhem at the Gazebo on our Kala Point beach. There will be awards for: best dressed, loudest Hawaiian shirt, best performer, super sleuth, and most amount of blackmail & bribery money won. Bring your favorite appetizer and drink. Plan on arriving between 5:30-6:00p.m. and staying until 9:00 p.m.

There is no limit to the number of people that can participate so there is room for everyone. To get more information about this Kala Point Fun 'n Games event call Carol Fischbach at 385-6482.

Happy sleuthing!

KIN publishers of **COMMUNITY FORUM**
P.O. Box 816
Port Hadlock, WA 98339

PRSR STD
US Postage Paid
Silverdale WA
Permit No 111

IN THIS ISSUE:

- **Election Results**

See Who The New Board Members Are

- **Changing The Way You Vote**

The Strategy of a "No Vote"

- **Merging On To Hwy 19**

How To Avoid A Ticket